

Update to

Leicestershire County

Health Overview and Scrutiny

Committee

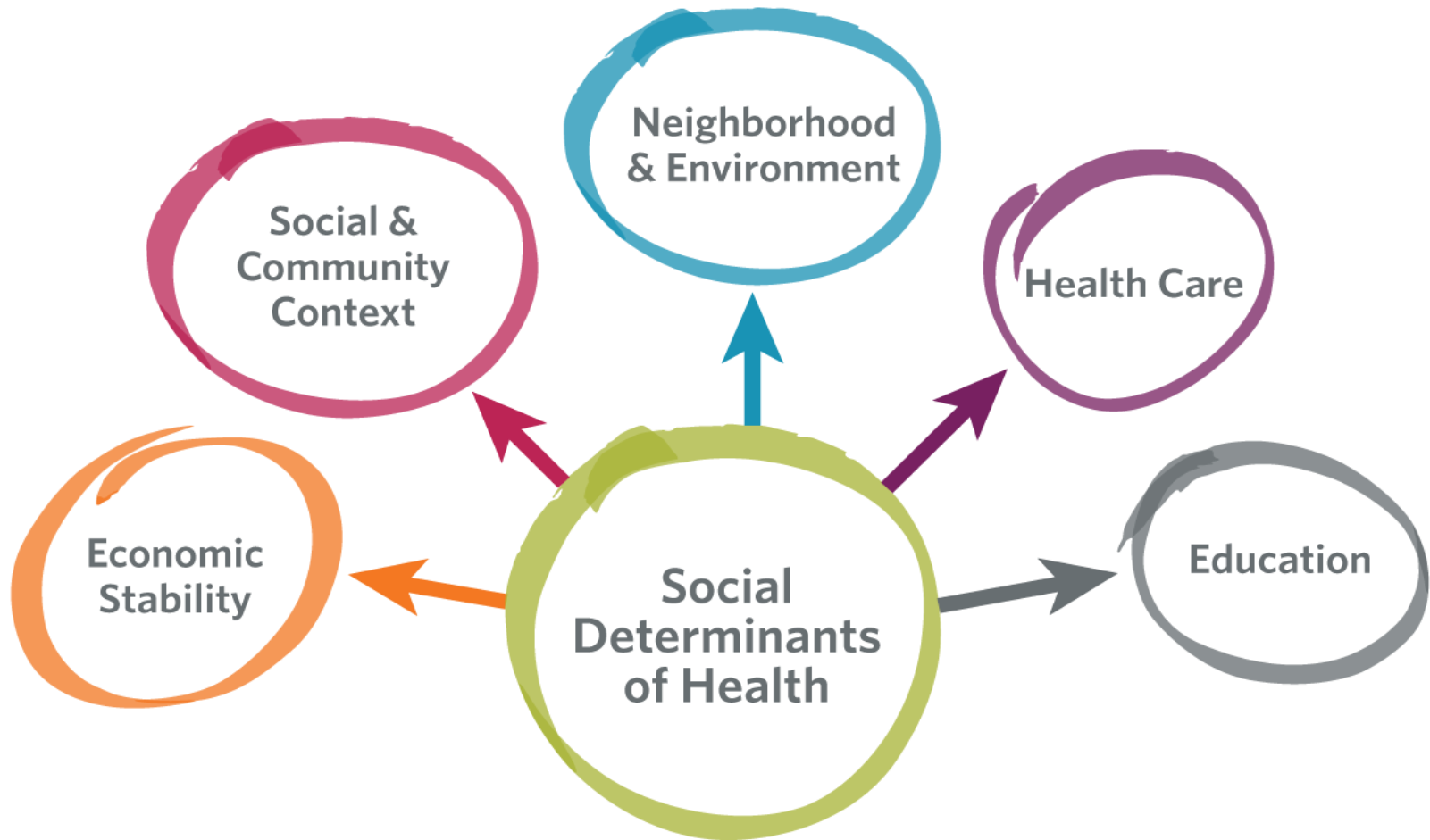
Place Led Plans

1st September 2021

Purpose

- To provide a brief context to the development of Place Lead Plans (PLP)
- To outline the current Leicestershire County approach to development

Our ICS is not all about health



“...the contribution of sectors outside health to population health outcomes exceeds the contribution from the health sector.” (WHO)

Our System

Integrated Care System: Leicester, Leicestershire and Rutland

Place

Leicester

Leicestershire

Rutland

Neighbourhoods

Place	Local Integration Hubs
Leicester	Central; South; North West; North East
Leicestershire	North West Leicestershire; Hinckley; Blaby & Lutterworth; Charnwood; Melton & Rutland; Harborough, Oadby & Wigston
Rutland	Rutland

“Place”: an important building block for health and care integration

The stated ambition is to create an **offer to the local population of each place**, to ensure that in that place everyone is able to:

- access clear advice on **staying well**;
- access a range of **preventative services**;
- access **simple, joined-up care and treatment** when they need it;
- access digital services (with non-digital alternatives) that put the citizen at the heart of their own care;
- access proactive support to keep as well as possible, where they are **vulnerable or at high risk**; and to
- expect the NHS, through its employment, training, procurement and volunteering activities, and as a major estate owner to play a full part in **social and economic development** and **environmental sustainability**.

(Integrating care: Next steps to building strong and effective integrated care systems across England report Nov. 2020) <https://www.england.nhs.uk/publication/integrating-care-next-steps-to-building-strong-and-effective-integrated-care-systems-across-england/>

Policy context

- White paper: Integration and Innovation introduced Health and Care Partnerships to support integration and address health, public health and social care need with a key responsibility being supporting place based joint work.
- Place-based plans are a key driver of this and plans are being developed for Leicester City, Leicestershire County and Rutland. The objectives for these plans are being developed with each place but will broadly reflect the following:
 - Taking a collaborative approach to health and wellbeing, bringing together a range of partners and people to plan together
 - Making a shift to prevention to tackle the causes of poor health and wellbeing as well as treating the symptoms
 - Ensuring there is alignment between national targets and local delivery across the system
 - Making the best use of community assets and people's own skills; promoting independence
 - Planning for changes in population (included housing growth) to ensure our health and wellbeing services are ready and able to respond to meet the needs of our population

Functions of Place

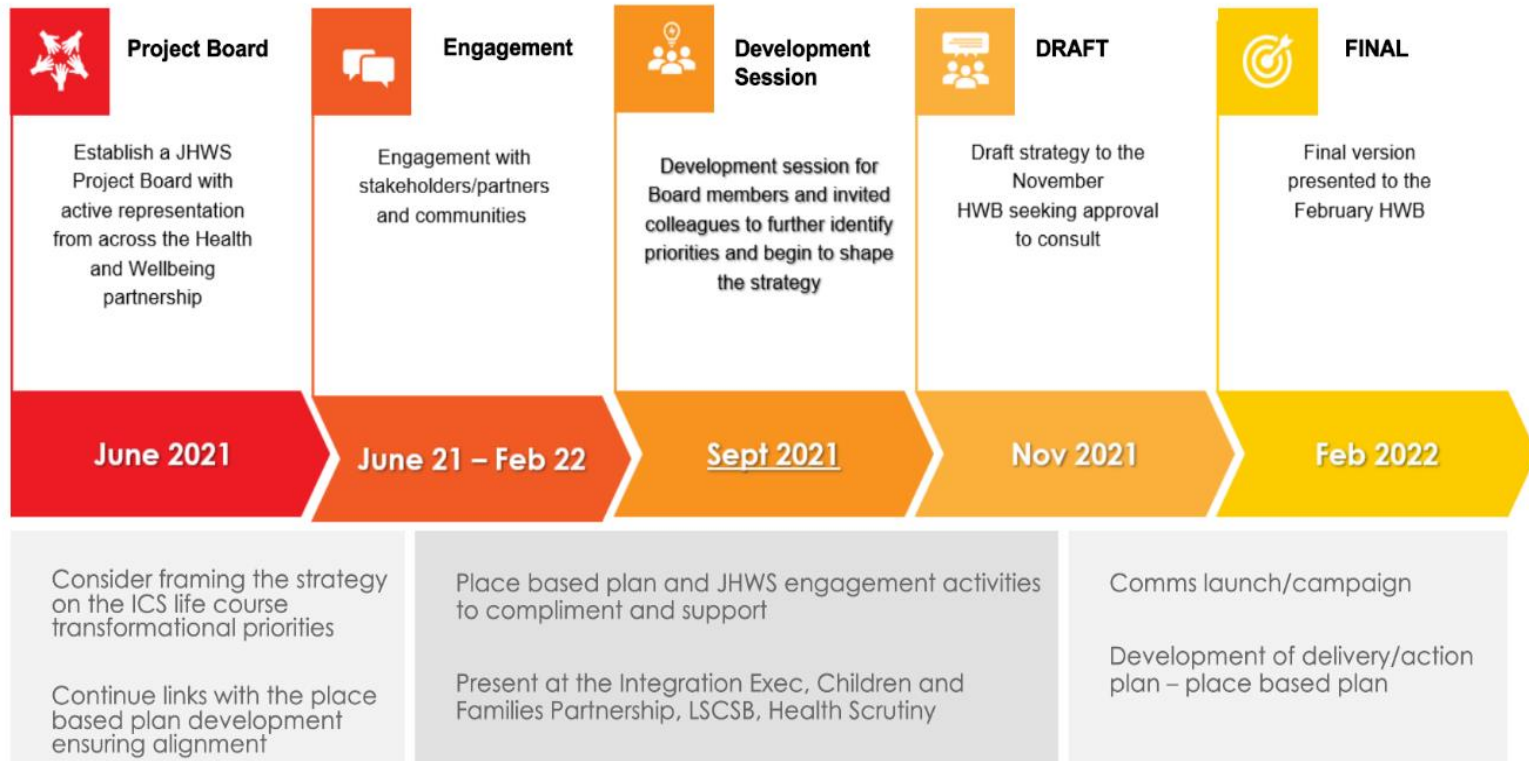
- To support and develop primary care networks (PCNs) which join up primary and community services across local neighbourhoods
- To simplify, modernise and join up health and care (including through technology and by joining up primary and secondary care where appropriate)
- To understand and identify – using population health management techniques and other intelligence – people and families at risk of being left behind and to organise proactive support for them
- Focus on the wider determinants of health
- Working with local communities
- To coordinate the local contribution to health, social and economic development to prevent future risks to ill-health within different population groups

Developing our plan

- There is recognition that there is an alignment between the expectations of place based plans and the Health and Wellbeing Strategy.
- The Leicestershire Joint Health and Wellbeing Strategy (JHWS) is due for renewal in 2022 and this provides a timely opportunity for Leicestershire to align the new strategy and expectations of place-based plans to create one clear single strategic vision and plan for place.
- A multi-partner multi agency coalition of colleagues, led by Public Health, are working collaboratively and cohesively on this important piece of work.
- Understanding and working with local residents and communities will be central to the refresh to ensure we understand what their health and care needs and priorities are. A long term communication and engagement strategy plan will be developed alongside the JHWS.
- The Health and Wellbeing Board supported the proposed development of a revised Joint Health and Wellbeing Strategy (JHWS) at their July 2021 meeting.
- There is also an acknowledgement that some more localised planning will need to take place particularly where there is large housing growth – this will be done outside of the Health and Wellbeing Strategy

Indicative timeline

Joint Health and Wellbeing Strategy - JHWS



This page is intentionally left blank